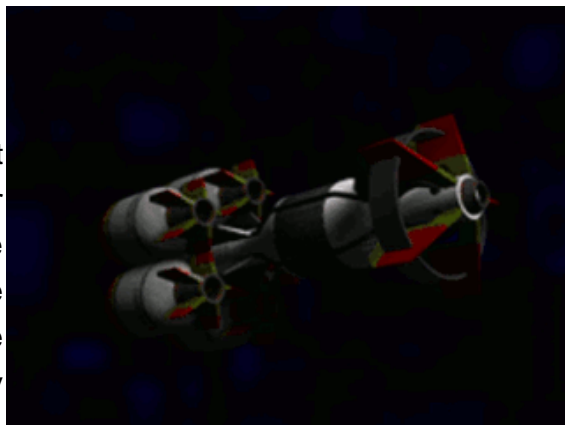


GTM-1 Synaptic Bomb

Missile propulsion unit carrying several small intelligent "bomblets" - when distance to target is less than 100 m or when time to impact is less than 2 sec., bomblets direct missile to the most vulnerable part of the ship of those parts of the ship facing the missile - bomblets then separate from missile propulsion unit and form a sphere - inertia continues to carry bomblets in the direction of the target - the missile propulsion



unit continues to advance toward the target - when the missile hits the target or 1.5 sec. after the missile should have hit the target, the bomblets explode - the spherical shape of the formation of the bomblets helps to ensure a fairly even level of damage across a sensitive area on the target - the spherical shape also ensures that the target will not be able to effectively maneuver away from the blast, thus "pinning" the target to a specific area in space - can also act as dumbfire - medium payload per bomblet (15 Kt) - very small payload for missile (2 Kt).

Nicknamed the "Earthshaker" by the bomber pilots who tested this, it is a bombers best defense against fighters. The Synaptic Bomb can do a lot of damage to a lot of ships at one time.

Model: GTM-1 Synaptic Bomb

Type: Missile

Scale: Starfighter

Skill: Starship Gunnery

Cost: 6,500

Fire Rate: 1

Fire Control: 1D

Space Range: 1-3/6/11

Atmosphere Range: 100-300/600/1100

Damage: 4D (see game notes)

Game Notes: Releases 5 bomblets which each do the above damage.

Page designed in Notepad, Logo`s done in Personal Paint on the Commodore Amiga

All text from Freespace 2, HTML and logos done by FreddyB

Images stolen from Freespace 2, copyright Volition.

Any complaints, writs for copyright abuse, etc should be addressed to the Webmaster [FreddyB](#).