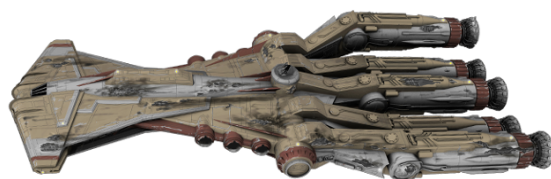


Starships D6 / Jedi training cruiser



Name: Jedi training cruiser

Scale: Capital

Length: 99 meters

Skill: Space transports: Jedi training cruiser

Crew: 25 skeleton: 2/+10

Passengers: 40 (usually), 400 (emergency transport)

Cargo Capacity: 50 to 4,000 metric tons (depending upon passengers)

Consumables: 7 months

Cost: Not available for sale

Hyperdrive Multiplier: x2

Nav Computer: Yes

Maneuvrability: 1D

Space: 5

Atmosphere: 295; 850 kmh

Hull: 3D

Shields: 1D

Sensors:

Passive: 20/0D

Scan: 40/1D

Search: 80/2D

Focus: 4/2D+2

Weapons:

Description: The Jedi training cruiser, also known as the Jedi cruiser, was a transport model used by the Jedi Order during the Clone Wars.

The Jedi training cruiser Crucible served as a transport for the Jedi Order. Professor Huyang maintained his workshop aboard it for over 1,000 years.

During the Clone Wars, it was used by Padawan Ahsoka Tano to transport a class of Jedi Initiates from Coruscant to Irum, where they underwent the ritual known as The Gathering. On the way back from the mission, it was attacked by pirates led by Hondo Ohnaka and boarded. Padawan Tano was captured by the pirates during the Jedi's subsequent escape when the ship went into hyperspace.

During the escape, the coolant system of the vessel was ruptured and in order to allow the system to restart they land the ship on the planet Florrum. After having rescued Tano, the younglings tried to escape using the Crucible. However, the pirates chasing the younglings shot the engines of the Crucible and it crashed, unable to fly with the damage it had sustained.

Stats by FreddyB, Descriptive Text from WookieePedia

Image copyright LucasArts.

Any complaints, writs for copyright abuse, etc should be addressed to the Webmaster [FreddyB](#).