

Name:

"Giant Slayer" Destroyer

Type: Virella Systems "Giant Slayer" Class
Destroyer

Scale: Capital

Length: 750 Meters

Skill: Capital Ship Piloting; Giant Slayer

Crew: 10,460, Skeleton; 3,500/+10

Passengers/Troops: 1,000

Consumables: 1 Year

Cost: 2.6 Million (used)

Cargo Capacity: 4,000 tons

Hyperdrive Multiplier: x4

Hyperdrive Backup: x20

Nav Computer: Yes

Space: 3

Hull: 5D

Shields: 2D

Sensors:

Passive: 25/0D

Scan: 45/1D

Search: 70/2D

Focus: 3/2D+2

Fighters: 24

Transports: 6

Weapons:

Twin Light Mass Driver

Scale: Capital

Fire Arc: Front

Fire Control: 1D

Fire Rate: 1/5

Space: 6-40/80/160

Atmosphere Range: 12-80/160/320km

Damage: 12D

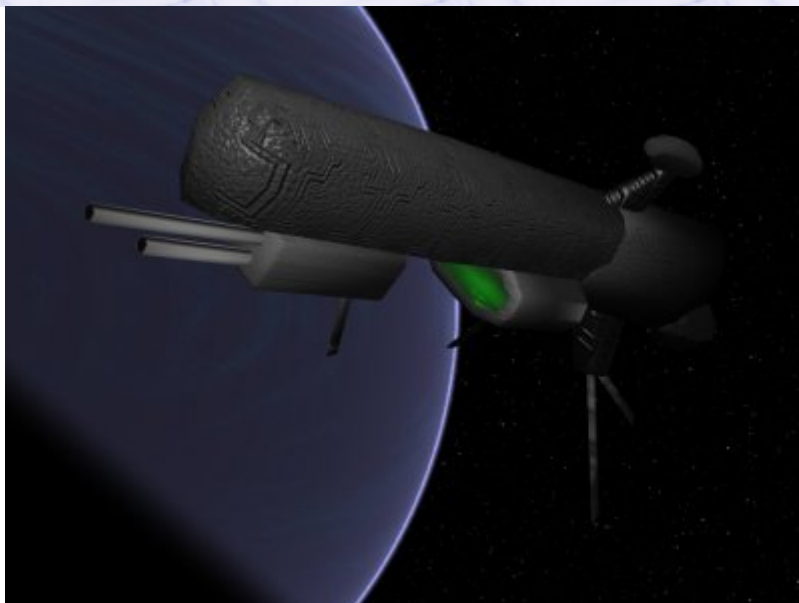
20 Turbo Lasers

Scale: Capital

Fire Arc: 10 Left, 10 Right

Fire Control: 2D

Space: 2-10/20/50



Atmosphere Range: 4-20/40/100km

Damage: 5D

Description: The Giant Slayer class vessel was designed for one purpose, to kill capital ships, with turbolasers for defence, its massive twin mass driver was one of the first weapons capable of planetary bombardment, hurling massive projectiles at hypersonic speeds towards their target. The Giant Slayer was first brought into service during the early days of the Old Republic, and was used against such opponents as Xim the Despot, but such is its power and ability that it still makes a powerful and useful weapon today. Although its hull is comparatively weak, and it is slow and unmanueverable, the range and power of its main gun means that it can strike down modern capital ships from well outside their weapon range, causing catastrophic damage to vessels as large as Super Star Destroyers. This however has obviously made them a target for enemy attack, and very few survive early skirmishes in any battle, as opponents hunt and kill these powerful vessels.

Page designed in Notepad, logo`s done on Personal Paint on the Amiga.

Text completely by FreddyB. Image is by "Bob the Dinosaur", copyright resides with him.

Any complaints, writs for copyright abuse, etc should be addressed to the Webmaster [FreddyB.](#)