

Name:

Pulsar Research Vessel

Type: Kuat Drive Yards Pulsar Research Vessel

Scale: Capital

Length: 950 Meters

Skill: Capital Ship Piloting: Pulsar

Crew: 1260; Gunners: 50, Skeleton Crew: 380/+15

Crew Skill: Astrogation 4D+1, Capital Ship Piloting 5D+2, Capital Ship Shields 4D+1, Capital Ship Gunnery 5D+2, Sensors 5D  
Passengers: 2000

Cargo Capacity: 3000 Tons

Consumables: 5 Years

Cost: Not available for sale

Hyperdrive Multiplier: X1

Hyperdrive Backup: X12

Nav Computer: Yes

Maneuverability: 1D

Space: 4

Atmosphere: None

Hull: 6D

Shields: 3D

Sensors:

Passive: 75/1D

Scan: 150/2D

Search: 300/3D

Focus: 5/5D

Fighters: 96 Starfighters

Shuttles: 8 Shuttles

Weapons:

8 Turbolaser Batteries

Scale: Capital

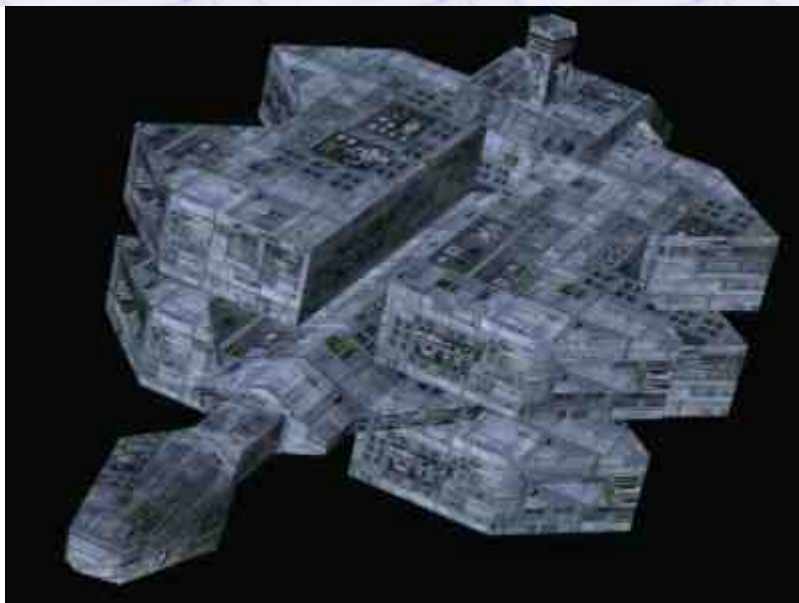
Fire Arc: 2 Front, 2 Back, 2 Left, 2 Right

Fire Control: 2D

Space: 3-15/36/75

Atmosphere: 6-30/72/150 Km

Damage: 5D



## 8 Anti-Starfighter Batteries

Scale: Starfighter

Fire Arc: 2 Front, 2 Back, 2 Right, 2 Left

Fire Control: 1D

Space: 1-10/25/50

Atmosphere: 1-10/25/50 Km

Damage: 5D

## 8 Tractor Beam Projectors

Scale: Capital

Fire Arc: 2 Front, 2 Back, 2 Right, 2 Left

Fire Control: 2D

Space: 1-5/15/30

Atmosphere: 2-10/30/60 km

Damage: 4D

Description: The Pulsar Research Vessel was designed and built for the Empire by Kuat Drive Yards to serve as a mobile research center not only for scientific research of stellar anomalies and exploration, but also to do development of technologies in an untraceable and easily mobile package. Although the vessel is somewhat smaller than a Star Destroyer, it has extremely powerful sensors and can carry a large number of fighters and shuttles, which is just as well since the defences mounted onto the vessel itself are somewhat lacking. Pulsars have been produced in moderate numbers, and have served the Empire by technological support for Imperial campaigns and also by testing and implementing Imperial technology in the field by helping introduce new fighters and weapons. In a few rare cases Pulsars have been pressed into military roles, especially after the fall of Emperor Palpatine, a role they are not well suited to but can act as reasonable carriers when the need forces them to.

---

Page designed in Notepad, logo`s done on Personal Paint on the Amiga.

Text completely by FreddyB. Image is by LucasArts, copyright resides with them.

Any complaints, writs for copyright abuse, etc should be addressed to the Webmaster [FreddyB.](#)