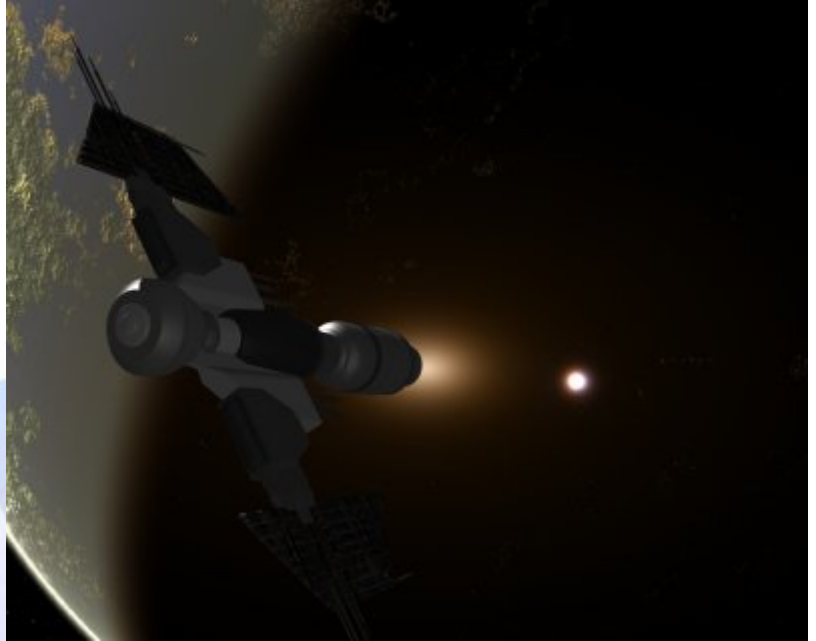


## Starships D6 / Loronar Corporation Warhammer

Name: Imperial Siege Cannon  
Type: Loronar Corporation Warhammer  
Class Siege Cannon  
Scale: Capital  
Length: 190m  
Skill: Battle Station Piloting; Siege Cannon  
Crew: 2,150 skeleton; 800/+15  
Passengers/Troops: 250  
Cargo Capacity: 2,000 Tons  
Consumables: 1 Year  
Hyperdrive Multiplier: x5  
Hyperdrive Backup: x20  
Nav Computer: Yes  
Space: 2  
Hull: 5D  
Shields: 4D  
Sensors  
    Passive: 10/1D  
    Scan: 50/2D  
    Search: 250/4D  
    Focus: 5/7D



### Weapons:

Plasma Siege Cannon (20 Charge Ammunition)

Fire Arc: Front

Scale: Death Star

Skill: Capital Ship Gunnery; Siege Cannon

Fire Control: 5D

Space Range: 1-25/50/125

Damage: 2D (can only fire once every fifteen minutes)

4 Medium Laser Cannon Turrets

Scale: StarFighter

Fire Arc: Turret

Fire Control: 2D

Space: 1-3/12/25

Atmosphere Range: 100-300/1.2/2.5km

Damage: 4D

## 2 TurboLaser Cannon Turrets

Scale: Capital

Fire Arc: Turret

Fire Control: 2D

Space: 2-10/25/60

Atmosphere Range: 4-20/25/120km

Damage: 4D

Description: The Warhammer Siege Cannon is an Imperial anti planet weapon similar but less powerful than the Death Star Battle Stations, armed with a powerful Plasma Siege Cannon the Warhammer can fire on target cities and bases wiping them out of existence with a single shot. The Plasma Charges fired are based around complex projectiles consisting of powerful energy matrices which are charged up by the vessel before firing, taking about ten minutes after the charge is loaded before it is ready to fire. Once released the charge converts into pure destructive plasma energy, however the plasma moves at a fairly slow speed compared to other energy weapons making it fairly easily dodged even by cumbersome capital ships, something which makes the weapon only really useful against non-mobile targets such as ground based installations and bases. The Siege Cannon is extremely slow, and not much use against shielded enemy worlds, but has found itself to be a vital tool for suppressing rebellion on controlled worlds and for providing fire support to invading Imperial Forces once shields have been disabled. The Siege Cannon is even rarer than Imperial Torpedo Spheres, but is far more destructive than its more expensive counterpart and the perfect weapon for the Empire to continue its reign of terror through use of the Tarkin Doctrine. These vessels are poorly defended except for their main weapon, carrying no fighters and carrying few anti-starfighter and anti-capital ship weapons, with their main weapon taking up the majority of the frigate sized hull, therefore Warhammer Siege Cannons are rarely unaccompanied, with other Capital ships or even Star Destroyers acting as their protectors against the attacks which are always likely on a weapon of this power.

---

Page designed in Notepad, logo's done on Personal Paint on the Amiga.

Text completely by FreddyB. Image is by "Bob the Dinosaur", copyright resides with him.

Any complaints, writs for copyright abuse, etc should be addressed to the Webmaster [FreddyB.](#)