

Golan

Trade Platform

Type: Golan Construction Corporation Trade Platform

Scale: Capital

Length: 7km long

Crew: 12,000

Passengers: 300,000

Cargo Capacity: 500,000 Tons

Consumables: 10 Years

Hull: 7D

Shields: 5D

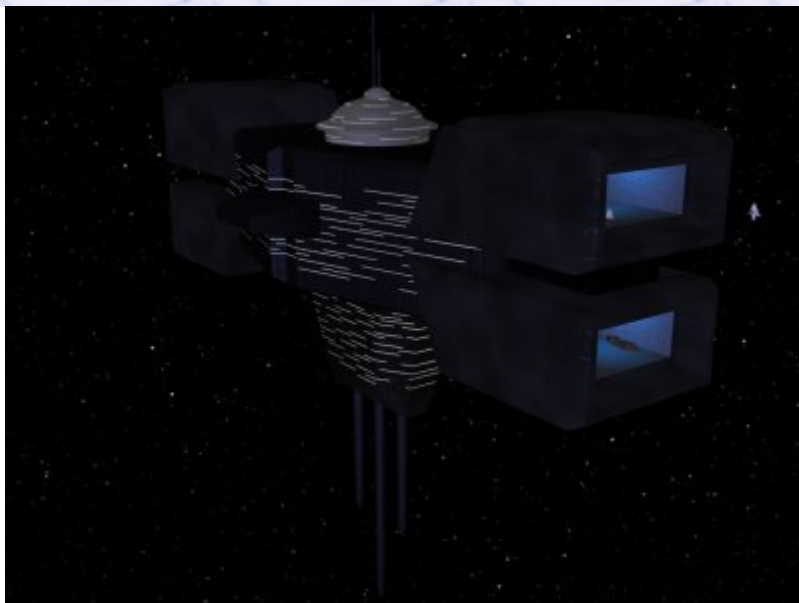
Sensors

Passive: 150/2D

Scan: 500/4D

Search: 2000/6D

Focus: 50/8D



Fighters: 24

Transports: 20 (Space Transports), 8 (Bulk Transports), 2 (Capital Ships)

Weapons:

Description: As well as manufacturing the various Golan defence platforms, the Golan Construction Corporation has also built this impressive station for many decades. The Trade Platform is in many way similar to its military brothers, but is completely unarmed, something that owners now change extremely quickly, but a sign of the peaceful years when the station was originally designed. These stations act as a centre for commerce and trade, capable of allowing many ships to dock, and containing room for businesses, cargo handling and entertainment for visitors, they have become common sights around many worlds as well as placed on their own in deep space.

Page designed in Notepad, logo`s done on Personal Paint on the Amiga.

Text completely by FreddyB. Image is by "Bob the Dinosaur", copyright resides with him.

Any complaints, writs for copyright abuse, etc should be addressed to the Webmaster [FreddyB.](#)