

Name:

Phindian Syndicate Battleship

Type: Phindian Syndicate Titan Class

Battleship

Scale: Capital

Length: 7,500 Meters

Skill: Capital Ship Piloting: Phindian

Battleship

Crew: 255,208, skeleton 50,000/ +15

Passengers/Troops: 55,000

Crew Skill: Capital Ship Piloting 4D+1,

Capital Ship Gunnery 3D+2, Capital Ship

Shields 3D+1

Consumables: 6 Years

Cargo Capacity: 405,000 Tons

Hyperdrive Multiplier: X6

Hyperdrive Backup: X18

Nav Computer: Yes

Space: 4

Maneuverability: --

Hull: 7D

Shields: 2D

Sensors:

Passive: 30/1D

Scan: 60/3D

Search: 120/4D

Focus: 2/5D

Fighters: 120

Transports: 80

Weapons:

100 Heavy Laser Cannon Turrets

Scale: StarFighter

Fire Arc: 30 Front, 20 Right, 20 Left, 30 Back

Fire Control: 1D

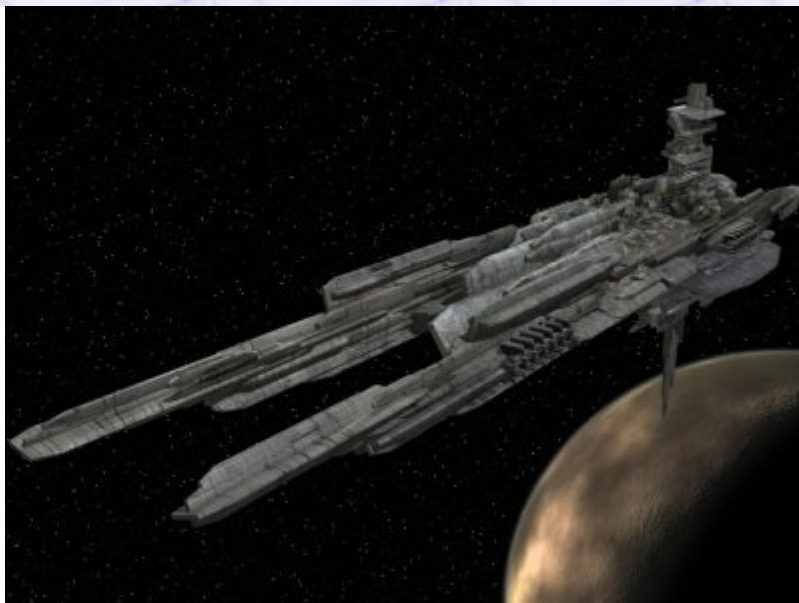
Space: 1-2/10/20

Atmosphere Range: 100-200/1/2km

Damage: 5D

160 TurboLaser Batteries

Scale: Capital



Fire Arc: 60 Front, 40 Left, 40 Right, 20 Back

Fire Control: 2D

Space: 3-15/36/75

Atmosphere Range: 6-30/36/150km

Damage: 5D

18 Tractor beam projectors

Scale: Capital

Fire Arc: 6 Front, 6 Left, 6 Right, 6 Back

Fire Control: 2D

Space: 1-5/15/30

Atmosphere Range: 2-10/30/60km

Damage: 4D

Description: The Phindian Syndicate were a powerful conglomerate during the Old Republic who controlled a large number of the manufacturing worlds across the galaxy for many years a century before the rise of the Empire. They were a major influence on the Republic Senate, and built and used these huge battleships to maintain their hold over their holdings and to help influence the planets outside their control. These vessels are extremely powerful at 7.5 kilometers long with almost three times the firepower of an Imperial Star Destroyer, however the expence of building these vessels was so high that not even a galactic conglomerate could afford more than a dozen or so of them.

---

Page designed in Notepad, logo`s done on Personal Paint on the Amiga.

Text completely by FreddyB. Image is by "Bob the Dinosaur", copyright resides with him.

Any complaints, writs for copyright abuse, etc should be addressed to the Webmaster [FreddyB.](#)