

Name:

Tenloss Orbital Station

Type: Tenloss Syndicate Orbital Customs Station

Scale: Capital

Length: 900m square

Crew: 1,200

Passengers: 1,500

Cargo Capacity: 90,000 Tons

Consumables: 1 Year

Cost: 1,500,000

Hull: 6D

Shields: 5D

Sensors

Passive: 500/2D

Scan: 2000/4D

Search: 10000/6D

Focus: 50/8D

Fighters: 12

Shuttles: 30

Weapons:

20 Laser Cannon Turrets

Fire Arc: 5 Front, 5 Back, 5 Left, 5 Right

Scale: Starfighter

Fire Control: 2D

Space: 1-3/12/25

Atmosphere Range: 100-300/1.2/2.5km

Damage: 5D

4 Turbo Laser Batteries

Scale: Capital

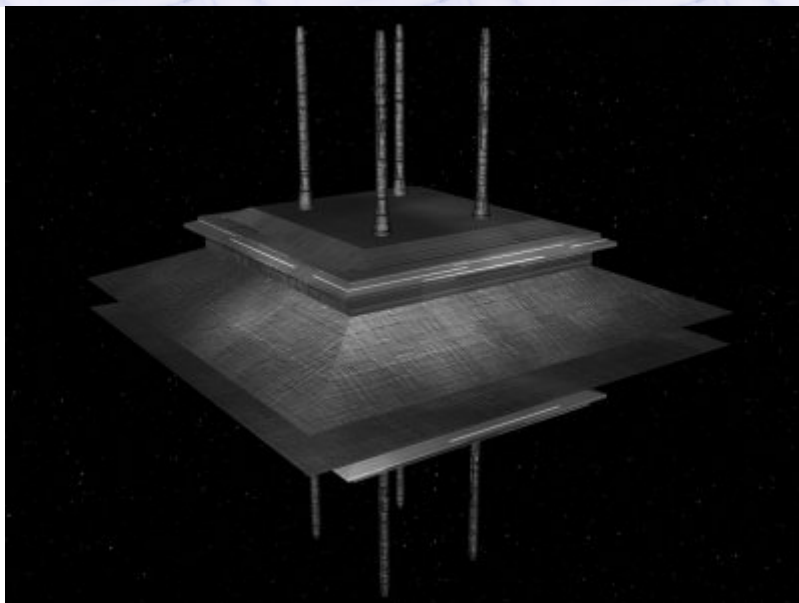
Fire Arc: 1 Front, 1 Left, 1 Right, 1 Back

Fire Control: 3D

Space: 3-15/36/75

Atmosphere Range: 6-30/72/150km

Damage: 6D



Description: Designed to provide an orbital customs facility so that these rules and regulations could be enforced around planetary bodies. These stations are well shielded and have reasonable arms, but

mainly are giant sensor platforms, where customs patrols can be launched and directed from. With plenty of room aboard for visitors, prisoners and captured contraband, they work either alone, or for more populated worlds, in concert with other customs stations to control the planets approaching traffic. A few of these stations have been used as trading posts, or refuelling stations, but they lack the facilities to excel at these roles, being simply designed and equipped which accounts for the low price for a facility of this size. Tenloss Orbital Customs Stations are common throughout the Empire, and were purchased by planetary governments at the direction of the Imperial Administration, however not all of these were placed in planetary orbits, some are located at hyperspace waypoints, and at deep space trading facilities, making them universally loathed by free traders, smugglers and pirates.

---

Page designed in Notepad, logo`s done on Personal Paint on the Amiga.

Text completely by FreddyB. Image is by "Bob the Dinosaur", copyright resides with him.

Any complaints, writs for copyright abuse, etc should be addressed to the Webmaster [FreddyB.](#)