

## White Star

Craft: Vorlon/Minbari White Star-class Corvette

Type: Attack cruiser

Scale: Capital

Length: 130 meters

Skill: Capital ship piloting: White Star

Crew: 75, gunners: 13, skeleton: 25/+5

Crew Skill: Astrogation 4D, capital ship gunnery 5D, capital ship

piloting 5D, capital ship shields 4D+1, sensors 4D

Passengers: 25 (troops and/or Rangers)

Cargo Capacity: 50 metric tons

Consumables: 1 year

Hyperdrive Multiplier: x1

Nav Computer: Yes

Manuverability: 3D

Space: 11

Hull: 5D\*

Shields: 2D

\* Can adapt; after being hit by one weapon type, reduce damage for the same weapon class against White Star's Hull roll by -2D

Sensors:

Passive: 100/2D

Scan: 200/3D

Search: 300/4D

Focus: 15/5D

Weapons:

Heavy Particle Cannon

Fire Arc: Front

Crew: 3

Skill: Capital ship gunnery

Fire Control: 4D

Space Range: 3-15/35/75

Atmosphere Range: 6-30/70/150 km

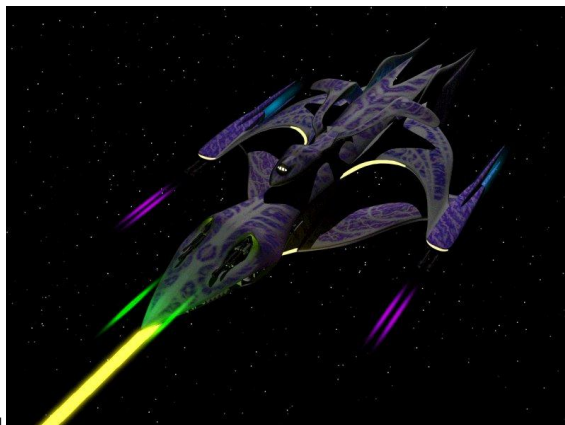
Damage: 8D

2 Heavy Pulse Laser Cannons

Fire Arc: Front

Crew: 5

Skill: Capital ship gunnery



Fire Rate: 3  
Fire Control: 2D+2  
Space Range: 1-3/12/25  
Atmosphere Range: 2-6/24/50 km  
Damage: 5D

Starfighter Complement: None

The White Star vessels are among the most advanced ships in the entire galaxy featuring both Vorlon and Minbari technology. They are the smallest known ships to be able to create their own jumpgates.

---

Page designed in Notepad, Logo`s done in Personal Paint on the Commodore Amiga  
All text and stats by Ryan Matheny, HTML and logos done by FreddyB  
Images stolen from an unknown website at some remote time in the past.  
Any complaints, writs for copyright abuse, etc should be addressed to the Webmaster [FreddyB](#).