

Name: GTC Aeolus

Type: Galactic Terran Alliance Aeolus Class Cruiser

Scale: Capital

Length: 272 Meters

Skill: Capital Ship Piloting: Aeolus

Crew: 730, gunners 30, skeleton 160/ +20

Passengers/Troops: 180

Crew Skill: Capital Ship Piloting 5D+1, Capital Ship Gunnery

4D+2, Capital Ship Shields 4D+1

Consumables: 2 Years

Cargo Capacity: 750 Tons

Hyperdrive Multiplier: X1

Hyperdrive Backup: X6

Nav Computer: Yes

Space: 3

Maneuverability: 1D

Hull: 10D

Shields: 0D

Sensors:

Passive: 25/1D

Scan: 50/3D

Search: 100/4D

Focus: 3/4D+2

Fighters: 0

Transports: 0

Weapons:

8 Medium Laser Cannon Turrets

Scale: StarFighter

Fire Arc: 3 Front/Left, 3 Front/Right, 2 Back

Fire Control: 3D

Space: 1-5/15/30

Atmosphere Range: 100-500/1.5/3km

Damage: 5D

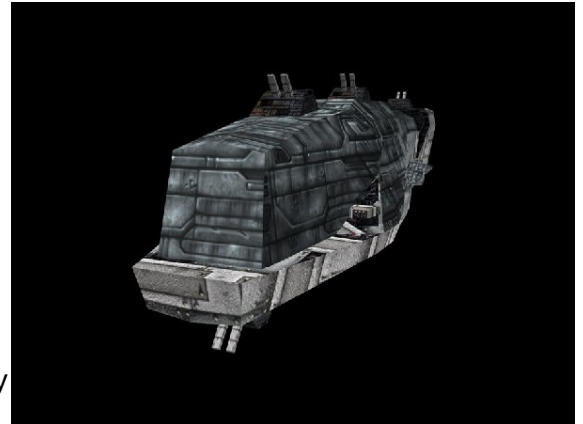
2 Heavy Laser Cannon Batteries

Scale: Capital

Fire Arc: 1 Front, 1 Back

Fire Control: 3D

Space: 1-5/15/30



Atmosphere Range: 100-500/1.5/3km

Damage: 5D

2 TurboLaser Batteries

Scale: Capital

Fire Arc: 2 Front

Fire Control: 4D

Space: 3-15/36/75

Atmosphere Range: 6-30/36/150km

Damage: 6D

Description: The GTC Aeolus is the first cruiser class ever produced by the RNI shipyards orbiting Laramis II. Only two dozen of these cruisers were put into service in GTVA fleets, with production ending in 2365. Allied Command assigns Aeolus-class ships primarily to guard slow-moving convoys against fighter and bomber wings, as these cruisers are severely out-gunned by most capital ships in service today. Their flak and AAA turrets serve as marvelous deterrents to smaller craft, however.

---

Page designed in Notepad, Logo`s done in Personal Paint on the Commodore Amiga

All text from Freespace 2, HTML and logos done by FreddyB

Images stolen from Freespace 2, copyright Volition.

Any complaints, writs for copyright abuse, etc should be addressed to the Webmaster [FreddyB](#).