

Starships D6 / Shivan Demon Class De

Name: SD Demon

Type: Shivan Demon Class Destroyer

Scale: Capital

Length: 2139 Meters

Skill: Capital Ship Piloting: Demon

Crew: 5760, skeleton 1820/ +20

Passengers/Troops: 4,000

Crew Skill: Capital Ship Piloting 5D+1, Capital Ship Gunnery 4D+2, Capital Ship Shields 4D+1

Consumables: 5 Years

Cargo Capacity: 1900 Tons

Hyperdrive Multiplier: X1

Hyperdrive Backup: X6

Nav Computer: Yes

Space: 2

Maneuverability: 0D

Hull: 18D

Shields: 0D

Sensors:

Passive: 32/1D

Scan: 75/3D

Search: 150/4D

Focus: 3/4D+2

Fighters: 150

Transports: 6

Weapons:

21 Medium Laser Cannon Turrets

Scale: StarFighter

Fire Arc: 9 Front/Left, 9 Front/Right, 3 Back

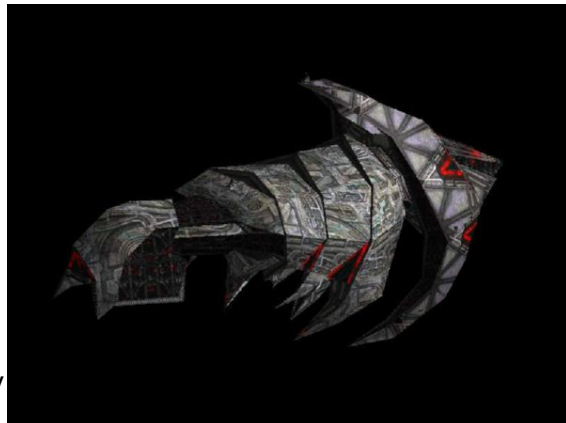
Fire Control: 2D

Space: 1-5/15/30

Atmosphere Range: 100-500/1.5/3km

Damage: 5D

3 Heavy Laser Cannon Batteries



Scale: Capital
Fire Arc: 1 Front/Left, 1 Front/Right, 1 Back
Fire Control: 3D
Space: 1-5/15/30
Atmosphere Range: 100-500/1.5/3km
Damage: 5D

2 TurboLaser Batteries

Scale: Capital
Fire Arc: Front
Fire Control: 4D
Space: 3-15/36/75
Atmosphere Range: 6-30/36/150km
Damage: 6D

Description: While the Demon-class Destroyer is easily one of the most massive ships we have yet seen, it is not the biggest or most powerful in the Shivan armada. However, it is still quite dangerous, with a plethora of missile turrets and two full squadrons of fighters. It is suggested that these capital ships be destroyed by bombers, as all cruisers that have attempted to engage a Demon have been destroyed.

The Demon is a Class A threat in any allied system.

Page designed in Notepad, Logo`s done in Personal Paint on the Commodore Amiga
All text from Freespace 2, HTML and logos done by FreddyB
Images stolen from Freespace 2, copyright Volition.
Any complaints, writs for copyright abuse, etc should be addressed to the Webmaster [FreddyB](#).