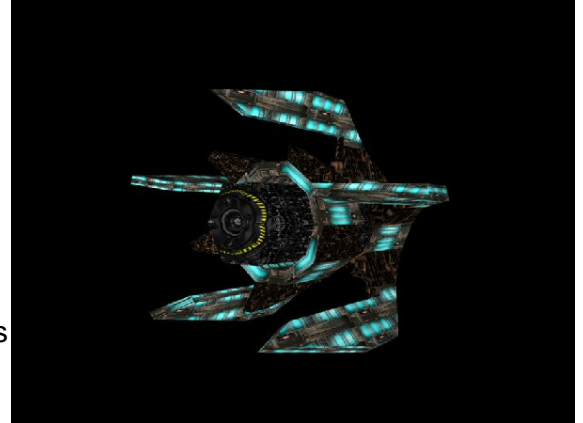


Starships D6 / Galactic Terran Alliance

Name: GTSG Mjolnir
Type: Galactic Terran Alliance Mjolnir Class Sentry Gun
Scale: Capital
Length: 108 Meters
Crew: 50, skeleton 160/ +20
Passengers/Troops: 180
Crew Skill: Capital Ship Gunnery 4D+2, Capital Ship Shields 4D+1
Consumables: 1 Month
Cargo Capacity: 50 Tons
Hyperdrive Multiplier: NA
Hyperdrive Backup: NA
Nav Computer: NA
Space: NA
Maneuverability: 0D
Hull: 4D
Shields: 8D
Sensors:
 Passive: 25/1D
 Scan: 50/3D
 Search: 100/4D
 Focus: 3/4D+2



Fighters: 0
Transports: 0

Weapons:

5 Medium Laser Cannon Turrets
 Scale: StarFighter
 Fire Arc: Turret
 Fire Control: 3D
 Space: 1-5/15/30
 Atmosphere Range: 100-500/1.5/3km
 Damage: 5D
1 TurboLaser Batteries
 Scale: Capital

Fire Arc: Turret
Fire Control: 4D
Space: 3-15/36/75
Atmosphere Range: 6-30/36/150km
Damage: 6D

Description: The GTSG Mjolnir is the most advanced sentry gun device known. Vastly tougher and deadlier than the earlier Watchdog, Cerberus, and Alastor models, the Mjolnir is a danger to any hostile fighter or bomber that comes within range. Its two beam weapons and three missile banks enable it to take on multiple enemies simultaneously. Mjolnirs are also referred to as RBCs (remote beam cannons). They are used to help protect the most vital front-line Alliance installations.

Page designed in Notepad, Logo`s done in Personal Paint on the Commodore Amiga
All text from Freespace 2, HTML and logos done by FreddyB
Images stolen from Freespace 2, copyright Volition.
Any complaints, writs for copyright abuse, etc should be addressed to the Webmaster [FreddyB](#).