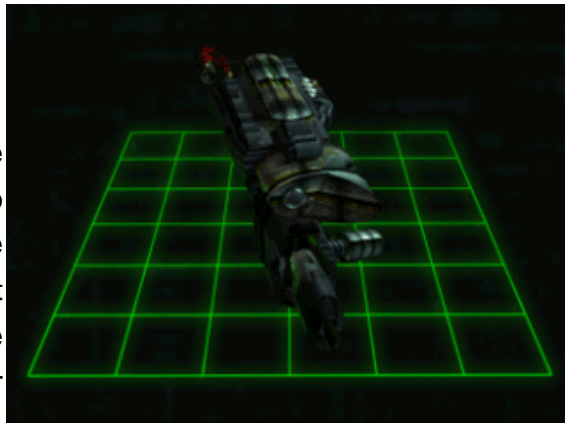


## Starships D6 / GTW-5 Prometheus (sta

### GTW-5 Prometheus (standard) Cannon

The original GTW-5 Prometheus S was removed from service when the link to Earth was lost and the GTVA was unable to obtain sufficient quantities of argon (a required element in the Prometheus's power-generation module). Recent deployment of Anuket and Zephyrus gas miners has enabled us to resume production of the GTW-5 Prometheus S. The S-type is a minor variant of the original Prometheus laser cannon. The S-type's faster recharge cycle and lower energy drain cause many pilots to prefer it over the R variant.



Model: GTW-5 Prometheus (standard) Cannon

Type: Blaster Cannon

Scale: Starfighter

Skill: Starship Gunnery

Cost: 4,500

Fire Rate: 1

Fire Control: 2D

Space Range: 1-5/8/15

Atmosphere Range: 100-500/800/1500

Damage: 5D

Game Notes: Gains a bonus 1D damage if used against an unshielded target.

---

Page designed in Notepad, Logo`s done in Personal Paint on the Commodore Amiga

All text from Freespace 2, HTML and logos done by FreddyB

Images stolen from Freespace 2, copyright Volition.

Any complaints, writs for copyright abuse, etc should be addressed to the Webmaster [FreddyB](#).