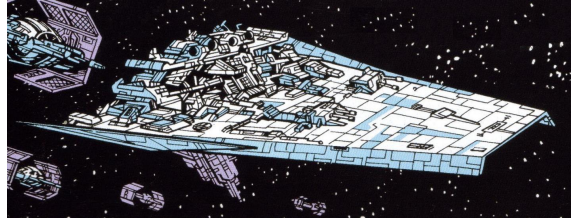


Starships D6 / Kuat Drive Yards Pursuit



Name: Pursuit-class light cruiser

Type: Kuat Drive Yards Pursuit-class light cruiser

Scale: Capital

Length: 500 Meters

Skill: Capital Ship Piloting: Pursuit Class

Crew: 1,120, skeleton 220/+20

Passengers/Troops: 700

Crew Skill: Capital Ship Piloting 5D+1, Capital Ship Gunnery 4D+2, Capital Ship Shields 4D+1

Consumables: 1 Year

Cargo Capacity: 4,000 Tons

Hyperdrive Multiplier: X2

Hyperdrive Backup: X16

Nav Computer: Yes

Space: 7

Maneuverability: 1D+1

Hull: 5D

Shields: 2D

Sensors:

Passive: 30/1D

Scan: 60/2D

Search: 120/3D+1

Focus: 3/4D+2

Fighters: 2 Squadrons

Transports: 1

Weapons:

20 Medium Laser Cannon Batteries

Scale: StarFighter

Fire Arc: 8 Front/Left, 8 Front/Right, 4 Back

Fire Control: 2D

Space: 1-5/15/30

Atmosphere Range: 100-500/1.5/3km

Damage: 5D

5 Light turbolaser batteries

Scale: Capital

Fire Arc: 2 Front/Left, 2 Front/Right, 1 Back

Fire Control: 2D

Space: 1-8/25/60

Atmosphere Range: 2-16/505/60km

Damage: 4D

4 Ion Cannons

Scale: Capital

Fire Arc: 2 Front/Left, 2 Front/Right

Fire Control: 2D+1

Space: 1-10/25/50

Atmosphere Range: 2-20/50/100km

Damage: 3D

3 Tractor beam projectors

Scale: Capital

Fire Arc: 1 Front/Left, 1 Front/Right, 1 Back

Fire Control: 4D

Space: 1-5/15/30

Atmosphere Range: 2-10/30/60km

Damage: 4D

2 Twin HeaVY TurboLaser Turrets

Scale: Capital

Fire Arc: Turret

Fire Control: 4D

Space: 3-15/36/75

Atmosphere Range: 6-30/36/150km

Damage: 6D

Description:

The Pursuit-class light cruiser was a type of capital ship in the Imperial Navy.

It resembled a small variant of the more common Star Destroyers that the Galactic Empire used, although the main hull was a rather flat, square-bowed platform rather than a deep-keeled dagger. The main engines were mounted in the superstructure rising above the hull platform at the rear, which was topped by a row of sensor globes.

The primary armament consisted of two weapons turrets, perhaps turbolasers, mounted ahead of the superstructure, which were probably supplemented by other weapons in less prominent emplacements.

The Pursuit-class cruiser had docking bay capable of launching several TIE series starfighters and was sometimes equipped with more potent TIE Advanced x1 starfighters. In open space, the cruiser's straight-line acceleration seems to have been slightly below that of Millennium Falcon.

The class was used and well-known in the year following the Battle of Yavin. One vessel was used as a command ship by Commander Strom in his sector near the Wheel, but little more is known about the

design's service history.

Page designed in Notepad, Logo`s done in Personal Paint on the Commodore Amiga
Descriptive text and Image from WookieePedia, Stats, HTML and logos done by FreddyB
Any complaints, writs for copyright abuse, etc should be addressed to the Webmaster [FreddyB](#).