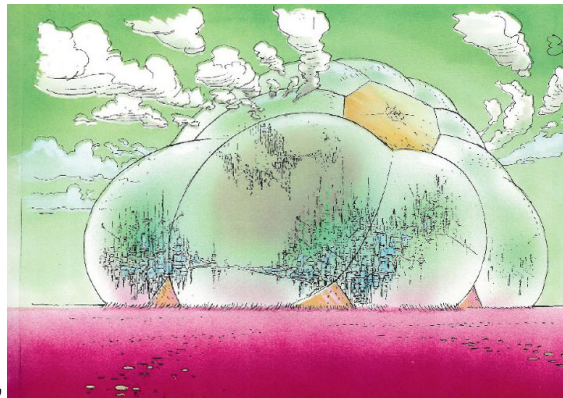


Planets D6 / Panna Prime

Name: Panna Prime
Region(s): Outer Rim Territories; Tion Cluster
Sector: Cronese Mandate
System: Panna system
Planet: Panna
Grid coordinates: S-6
Primary terrain: Soft mud
Native species: Paar's ichthyodont, Panna dragon, Panna bird, Dianoga
Immigrated species: Humans, Rodians, Kubaz, Various species
Primary language(s): Galactic Basic Standard
Major cities: Panna City



Description: Panna Prime was a moon in the Panna system that orbited the planet Panna along with two other moons.

The entire moon was covered in a gelid ocean consisting of mud in which many different creatures dwelt. The moon was inhabited and had at least one city which catered to many different alien species. The Galactic Empire had a presence on the moon during the Galactic Civil War.

In 0 ABY, Luke Skywalker, R2-D2, and C-3PO encountered Boba Fett near Panna City when Luke landed his Y-wing there. Although Fett at first appeared to be a friend, and helped the droids find a cure for Skywalker and Solo's illness at the time, Luke and R2 eventually learned that his intentions were to locate the rebel base for Darth Vader. Fett escaped via his jetpack after his true intentions were revealed.

The inhabitants of the moon were known for their distinct hotcakes, simply called Panna cakes. This recipe was popular enough to be exported off-world, and served in locations such as Dex's Diner on Coruscant.

Stats by FreddyB, descriptive text from WookieePedia

Image copyright LucasArts.

Any complaints, writs for copyright abuse, etc should be addressed to the Webmaster [FreddyB](#).