

Starships D6 / Resistance Transport Shuttle

Name: Resistance Transport Shuttles

Scale: Starfighter

Skill: Space Transports - Resistance Transport Shuttle

Crew: 1

Passengers: 30

Crew Skill: Space Transports 5D, Starship Shields 4D

Consumables: 3 Weeks

Cargo Capacity: 70 Tons (without passengers)

Hyperdrive Multiplier: x2

Hyperdrive Backup: /

Nav Computer: Yes

Space: 5

Atmosphere: 295;850kmh

Maneuverability: 1D

Hull: 3D

Shields: 1D

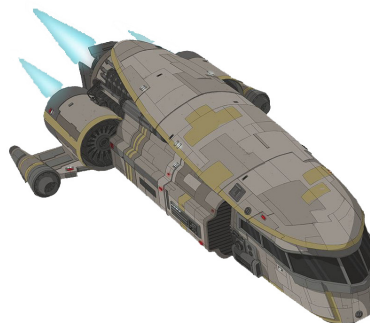
Sensors:

Passive: 10/0D

Scan: 25/1D

Search: 45/2D

Focus: 2/3D



Weapons:

Description: These transport vessels were used by the Resistance to evacuate recruits from Dantooine during a First Order attack. One of them is shot down by Jace Rucklin in his Tie Fighter, but the other two escaped into Hyperspace with their precious cargo of recruits.

Stats by FreddyB, Descriptive Text from Wookieepedia.

Image copyright LucasArts.

Any complaints, writs for copyright abuse, etc should be addressed to the Webmaster [FreddyB](#).