

Name: Clone Impound Vessel

Scale: Starfighter

Length: 58m

Skill: Space Transports - Clone Impound Vessel

Crew: 2

Crew Skill: varies

Passengers: 12

Consumables: 1 Month

Cargo Capacity: 100 Tons

Hyperdrive Multiplier: x4

Hyperdrive Backup: no

Nav Computer: Yes

Space: 4

Atmosphere: 450;800kmh

Maneuverability: 1D

Hull: 4D

Sensors:

Passive: 20/0D

Scan: 40/1D

Search: 60/2D

Focus: 2/3D

Weapons:

Tractor Beam Projector (2)

Fire Arc: Front

Scale: Capital

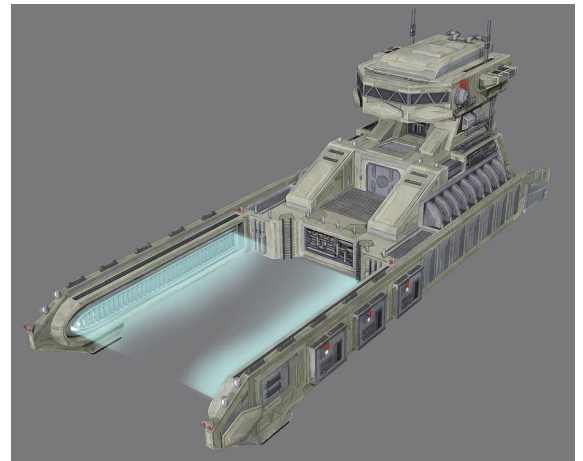
Skill: Starship Gunnery

Fire Control: 2D

Space Range: 1-8/15/20

Atmosphere Range: 100-800/1.5km/2 km

Damage: 5D



Description: The clone impound vessel, also known as the tow truck, was a type of starship utilized by the clone troopers of the newly-formed Galactic Empire. The vessel featured two frontward-facing arms that could be used to seize starships. The clone impound vessel was utilized on the planet Saleucami, where starships—including civilian vessels—were seized and taken to an impound lot at the spaceport

Any complaints, writs for copyright abuse, etc should be addressed to the Webmaster [FreddyB](#).