

## Characters D6 / ES-PSA (Droid Ricksh

Name: ES-PSA  
Manufacturer: Serv-O-Droid, Inc.  
Product line: RIC-series general labor droid  
Model: RIC-920 rickshaw droid  
Class: Labor droid  
Height: 1.1 meters  
Gender: Masculine programming

Dexterity: 1D  
Knowledge: 1D  
Mechanical: 1D  
Perception: 1D  
    Bargain: 3D  
Strength: 3D  
    Lifting 5D  
Technical: 1D

### Equipped with:

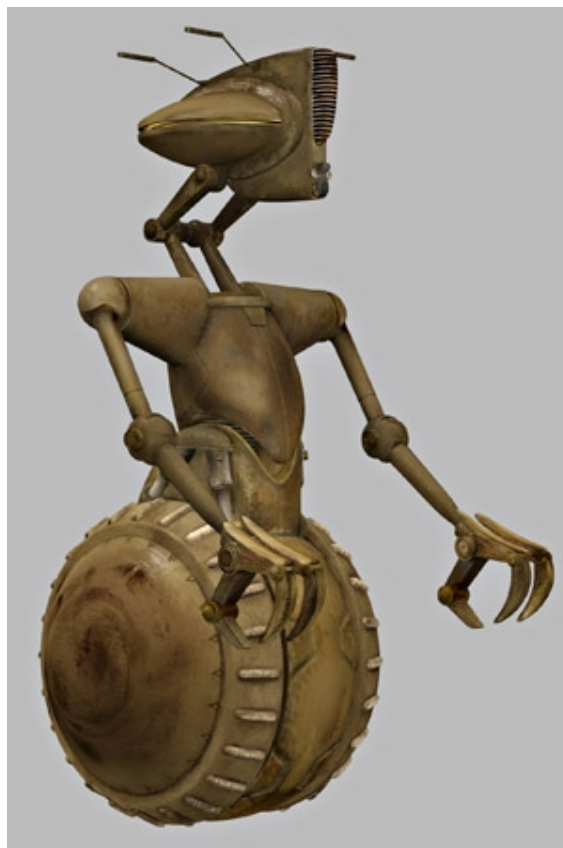
- Humanoid Torso (two arms)
- Disc Mounted Treads
- One visual and one auditory sensor - human range
- Basic vocabulator

Move: 18  
Size: 1.1 meters tall  
Cost: 1,000

Description: ES-PSA, also known as Espasa, was a masculine RIC-920 rickshaw droid manufactured by Serv-O-Droid, Inc.. He operated as a rickshaw driver in the spaceport of Mos Espa on Tatooine, during the time of the Separatist Crisis and the Clone Wars.

### *Biography*

ES-PSA was designed as a general purpose labor droid with rudimentary programming, allowing it to complete basic tasks. It ended up as one of several RIC droids employed as rickshaw drivers in Mos Espa. Propelled by a pair of disc-mounted treads, ES-PSA pulled an unlicensed rickshaw through the busy spaceport streets.



Prior to the outbreak of the Clone Wars, ES-PSA transported Anakin Skywalker and PadmÃ© Amidala from a Mos Espa docking bay to Watto's junk shop, during Skywalker's search for his mother.

---

Stats by FreddyB, Descriptive Text from WookieePedia.

Image copyright LucasArts.

Any complaints, writs for copyright abuse, etc should be addressed to the Webmaster [FreddyB](#).