

Characters D6 / P2 (prototype astrome

Name: P2 (prototype astromech droid)

Class: Astromech droid

Sensor color: Dark

Plating color: Gray

DEXTERITY 1D

KNOWLEDGE 1D

MECHANICAL 1D

Space Transports 2D

PERCEPTION 1D

Search 2D

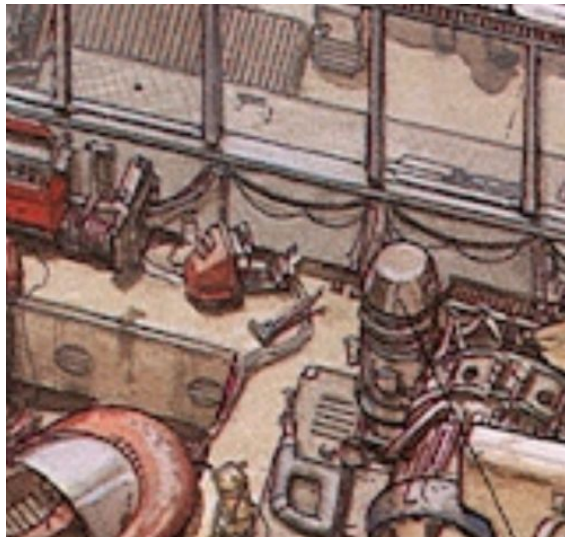
STRENGTH 2D

TECHNICAL 2D

Machinery Repair 4D

Repulsorlift Repair 5D

Space Transports Repair 4D



Equipped With:

Three wheeled legs (one retractable)

Heavy grasper arm

Three medium arms (retractable)

Laser welder (5D damage, 0.5 metre range)

Video display screen

Buzzsaw (5D damage)

Special Abilities:

Strengthened Body: The P2's shell gives it +1D to STR when resisting damage.

Move: 4

Description: In 0 BBY, the prototype astromech droid P2 stood within the equipment-filled garage of Tosche Station on the planet Tatooine, dwarfing a nearby R5 droid who was repairing a generator. Soon after the Tantive IV, a ship of the Rebellion, battled the Galactic Empire in the planet's orbit, the droids bore witness to an attempted theft of parts from Fixer's five-engined landspeeder by a couple of Jawas, a diminutive scavenger species native to Tatooine.

P2 shared its name with the P2 astromech unit, a tall droid model manufactured by the Industrial

Automaton company decades before the Clone Wars.

Stats by FreddyB, Descriptive Text from WookieePedia.

Image copyright LucasArts.

Any complaints, writs for copyright abuse, etc should be addressed to the Webmaster [FreddyB](#).