

Name: Ikas-Adno Model 67 Shrieker Speeder Bike

Type: Speeder Bike

Scale: Speeder

Skill: Repulsorlift operation: Speeder Bike

Crew: 1

Passengers: 1

Cargo Capacity: 2kg

Cover: 1/4

Altitude Range: Ground level-15m

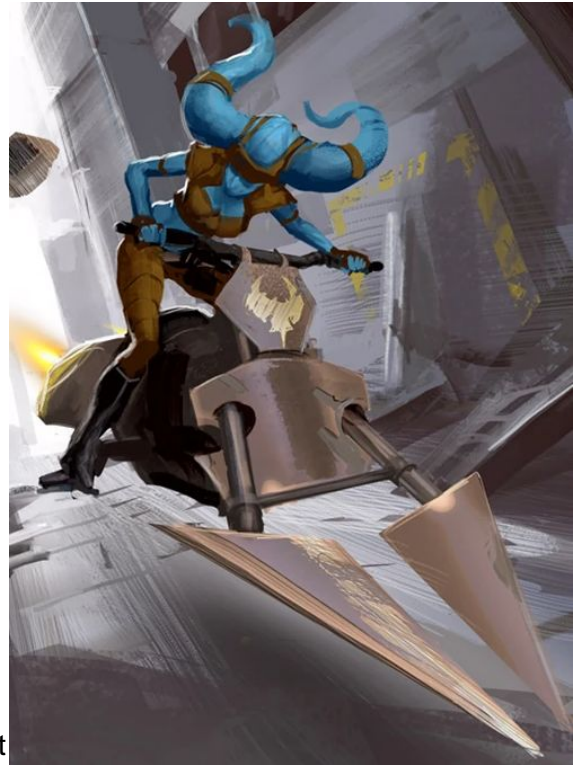
Cost: 9000 credits (5000 used)

Maneuverability: 2D

Move: 280; 800kmh

Body Strength: 2D

Weapons:



Description: The Model 67 Shrieker was a speeder bike that was fast, lightweight and very maneuverable.

Characteristics

Designed by Ikas-Adno, it resembled the earlier 74-Z speeder bikes of the Galactic Empire. It had a pair of forward directional steering vanes and a variable boost repulsorlift engine. It also had an advanced repulsor field generation system that allowed for rapid altitude changes. It had an elongated seat which gave room for one passenger.

It was named for the characteristic screech its engines made when at full throttle. It was favored by pilots who preferred speed over protection. The Shrieker was made with common parts, and was very easy to maintain or modify.

History

The Model 67 Shrieker was popular on the Outer Rim due to its low price and ease of operation. Bantha Rawk owned several Model 67s and his children rode them during a fight with Black Sun operatives on Iego.

Stats by FreddyB, Descriptive Text from WookieePedia.

Image copyright LucasArts.

Any complaints, writs for copyright abuse, etc should be addressed to the Webmaster [FreddyB](#).